

# BRONX CUT TO LENGTH LINES

For over forty years, Bronx Engineering Limited has been a world leader in the design, manufacture, installation and commissioning of high quality coil process equipment. Whether your product is 0.15mm thick surface sensitive aluminium, coated material or 20mm thick hot rolled steel, Bronx Engineering has the solution.



## Features

- Automatic coil loading and feeding
- Automatic pre-setting of machine adjustments
- Computer controlled precision levelling
- High speed precision shearing
- Stacking systems for single or multiple blanks
- Inspection system with sheet classification facilities
- Drop sheet stacking
- Air flotation stacking
- Magnetic belt type stacking
- Vacuum, belt type stacking
- Bomb door stacking
- Single or multi position stacking

Continued product improvement through research and development, with investment in people and up to date technology, has given the company a competitive edge. Bronx Engineering Limited concepts for cut to length lines are the result of many years experience and co-operation with ferrous and non-ferrous industries throughout the world.



**Kombi Lines**  
(Multi Blanking Cut to Length)

*Typical Data:*

Strip Thickness	-	0.2 mm to 4.0 mm
Strip Width	-	300 mm to 2,000 mm
Line Speeds	-	Up to 100 metres/min
Capacity	-	Up to 750 blanks/min

To meet the high specifications and JIT (Just in Time) requirements of industry throughout the World, Bronx has designed and developed the 'Kombi II micro processor controlled high speed multi blanking line.

This type of line enables single or multiple precision levelled blanks of extreme close tolerances on both length and width to be produced in one operation direct from coil stock.

Line speeds up to 100 metres per minute and a shearing capacity up to 150m cuts per minute, producing 750 blanks per minute will improve your production rates, reduce your overheads by eliminating labour intensive guillotining and increase your profitability.

The 'Kombi II' has been designed with the JIT principle in mind, through quick and easy changing from one production requirement to maximise the equipment's usability.

The flexibility of this equipment also allows it to be used as a conventional cut to length line with or without edge trimming.



**Flying Shear Line**

*Typical Data:*

Strip Thickness	-	1.0 mm to 16 mm
Strip Width	-	500 mm to 2,500 mm
Line Speeds	-	Up to 100 metres/min
Capacity	-	Up to 80 blanks/min



**Kombi type Blanking Line**

*Typical Data:*

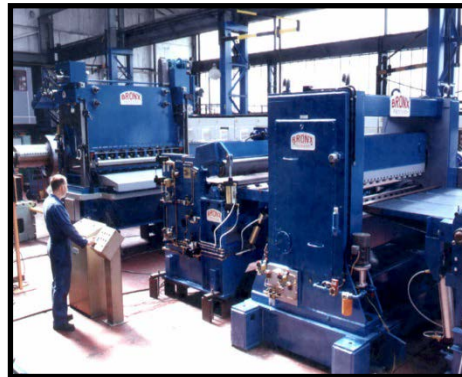
Strip Thickness	-	0.2 mm to 4.0 mm
Strip Width	-	300 mm to 2,000 mm
Line Speeds	-	Up to 100 metres/min
Capacity	-	Up to 150 blanks/min



**Stop/Start Line**

*Typical Data:*

Strip Thickness	-	3.0 mm to 16 mm
Strip Width	-	500 mm to 2,500 mm
Line Speeds	-	Up to 60 metres/min
Capacity	-	Up to 35 blanks/min



**Rotary Shear Line**

Bronx Engineering has developed and produced a high technology rotary shear. This shear, which is suitable for both ferrous and non-ferrous materials is initially designed to process materials up to 3.5 mm thick.

The 'ROTACUT' shear can be supplied as an integral part of a new installation or retrofitted into your existing cut to length of continuous process line.

For more information on our range of Bronx Process Lines please contact our Business Development team or sales office [salesgroup@thebronzgroup.com](mailto:salesgroup@thebronzgroup.com) or visit our web page [www.thebronzgroup.com](http://www.thebronzgroup.com)  
Phone: (Aust) +61 2 9534 4233 or (UK) +44 1384 486648

